

Southern Living

56 NO-COOK SUMMER RECIPES

EASY APPETIZERS
FAST SUPPERS
COOL DESSERTS

PLUS

- PEACH POUND CAKE
- PIMIENTO CHEESE
- SQUASH CASSEROLE
- FRIED OKRA
- CHICKEN SALAD

AND

→
**ICE-
CREAM
PIE!**



JULY 2013



**Carefree
Flowers for
Containers**

**Bedroom
Makeovers
Under \$300**

**The Perfect
Coastal
Road Trip**

Rightsize Your Remodel

See how a family in Mount Pleasant, South Carolina, exchanged wasted square footage for wall-to-wall livability



WRAPPED IN WOOD, a freestanding Thermador refrigerator (at right) mimics a stately armoire.



Problem The kitchen was dark and awkward with its angled island and heavy cabinetry.

Solution Reconfiguring the layout, forgoing upper cabinets, lightening walls and floors, and designing a refrigerator surround that looks like furniture created an inviting room that blends beautifully with nearby living spaces.

A

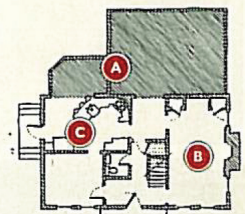
ndy and Michele Topka were happily tucked away in a quiet Charleston-area cul-de-sac, but as their family grew, their traditional home started feeling claustrophobic. The kitchen was closed off from living spaces, and the home lacked easy access to the outdoors and cheerful Southern sunshine that Michele, a transplanted Californian, craved. "We debated moving," she says. "But every house we looked at needed remodeling in one way or another, and we realized we really preferred to stay right here."

The Topkas teamed up with architect Heather Wilson and interior designer Jen Langston to rework their home with a more family-friendly layout and fresh, natural style. Because they didn't want a bigger house—just a smarter one—they focused their remodel mainly on the lower level. Out went earlier, ill-planned additions, and in came an open, L-shaped layout that incorporates separate seating, dining, and cooking areas. Thanks to vaulted ceilings and five sets of French doors, the renovated space feels light, airy, and connected to nature. "The old layout was so dark and compartmentalized," says Michele. "Now it's the opposite—bright, cheery, and open."

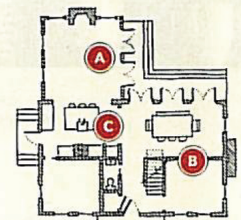


TOUR THE SPACE

Architect Heather Wilson removed prior mistakes and designed a more open space.



BEFORE



AFTER

A AIRY LIVING ADDITION Two previous additions were removed to allow for a new vaulted living area that opens to the kitchen and the bigger backyard.

B NEW STUDY AND DINING ROOM The formal living room, with its traditional fireplace, saw little use. To save money, they left the brick chimney outside, removed the mantel, and drywalled over the opening. A wall with pocket doors divides the space into two rooms.

C OPEN KITCHEN The reconfigured kitchen works as an axis point for the whole space. A playroom that was located behind the stove wall was converted into a hardworking pantry/laundry room combo.

what they did:

THE KITCHEN

1 KEPT IT SIMPLE WITH WHITE Jen tiled the entire stove niche with white ceramic subway tile for a clean look that blends seamlessly with the creamy walls (painted Intense White by Benjamin Moore). A single long, white shelf replaces open cabinetry and keeps dishes right at hand.

2 ADDED A POP OF COLOR Andy had but one request: a Viking range in the Viking Blue custom color. Jen lacquered the surrounding cabinet doors to match the stove. The deep teal sparked the family room's color palette, which includes silvery grays and purples punctuated by pops of green and blue.

3 DESIGNED A STATEMENT ISLAND Because the island is the hub of the new open layout, it needed to shine. For a sleek look, Jen designed the marble countertop with a waterfall edge—the counter material spills over and goes all the way to the floor. She finished the white-on-white look with burnished brass hardware and fixtures that, like gold jewelry, add a warm glow.

4 TUCKED IN STYLISH STORAGE These slender but sturdy shelves keep necessities close at hand. The reclaimed-wood planks match bookshelves in the family room, visually linking the two spaces.